



Record Electrical Associates Ltd

Pneumatic Pressure Governor Switch: SUPPLIED NEW OR OVERHAULED



The Pneumatic Pressure Governor Switch serves as a critical component within the rail industry's compressor control system, ensuring optimal air pressure levels for seamless operations. Here's how it works:

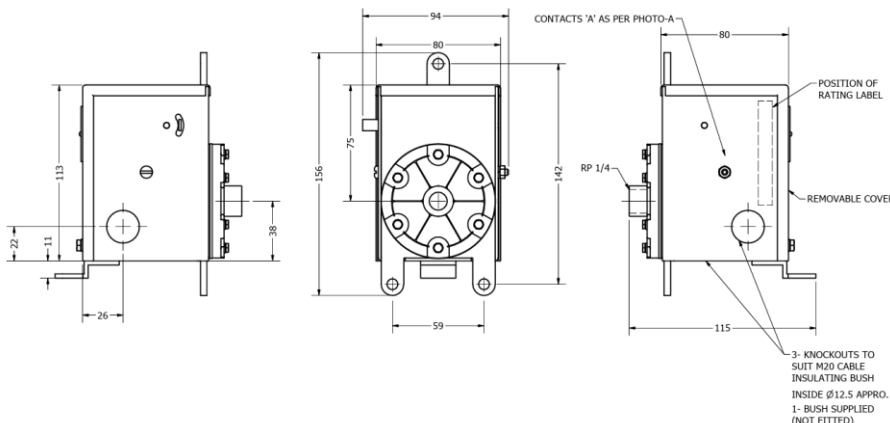
1. Pressure Monitoring: Monitors air pressure, activates on low levels.
2. Contact Close: Low pressure closes governor contact.
3. Contactor Activation: Sends low voltage to compressor, initiates power
4. Pressurization: Compressor raises air pressure for pneumatic functions.
5. Pressure Sensing: Governor opens contacts at desired pressure.
6. Contactor Deactivation: Compressor power supply disengaged.

- Ensures optimal air pressure for safety and efficiency.
- Vital role in pneumatic systems across rail industry.
- Repair kits available for maintenance and repair

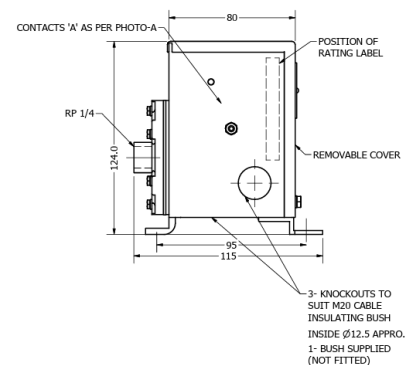


PHOTO -A

WALL MOUNTED



BOTTOM MOUNTED



FOR MORE DETAILS CALL 0161 864 3583 OR VISIT www.reauk.com info@reauk.com
 Record Electrical Associates Limited, Unit C1 Longford Trading Estate, Thomas Street, Stretford,
 Manchester, M32 0JT